

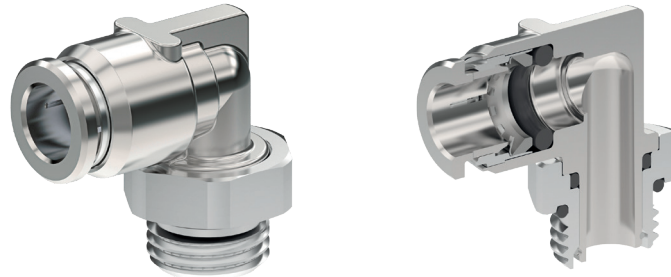
iQ parts
IQ-PARTS-SHOP.COM



**SPECS &
INFORMATION**

ELSA Fittings Stainless Steel AISI 316L (1.4404) (Push-in)

ELSA the Established push-in connector from AVS Römer



Stainless steel version

Operating pressure Technical vacuum up to maximum pressure as stated in the respective specification table under PN. Temperature range 0 °C to +200 °C (for restrictions see specification table)

Application

ELSA push-in fittings made of stainless steel 1.4404 are used in particular for aggressive gases and liquid media under harsh operating conditions. These push-in fittings are equipped with FDA-compliant FKM sealing rings as standard, on request, these are also available with FDA-compliant EPDM sealing rings approved according to the UBA elastomer guidelines.

CHARACTERISTICS

BODY MATERIAL / SUITABILITY

| | |
|--------------------------------------|--|
| Stainless steel AISI 316L | Corresponds to 1.4404 stainless steel . Suitable for many aggressive media, in particular at higher pressures. The FKM seal is FDA-compliant and can be used in the food and pharmaceutical industries. |
| Other materials | see relevant products |
| Approval | NSF/ANSI 169 |

TUBE

| | | |
|---------------------------------|---|--------|
| Outside diameter [mm] | 4, 6 and 8 | 10, 12 |
| Permitted tolerance [mm] | ±0.1 | ±0.15 |
| Permitted grades | Polyamide (PA), polyurethane (PU), fluorine polymer (FEP and PFA) | |

THREAD

| | |
|------------------------|---|
| External thread | "M" cylindrical thread: Metric ISO thread M5 |
| External thread | "G" cylindrical thread: Whitworth pipe thread DIN ISO 228-1 G 1/8 up to G 3/8 |
| External thread | "R" conical thread: Whitworth pipe thread DIN 2999-1 and ISO 7/1 R 1/8 up to R 1/2. Designed for pairing with internal thread according to DIN ISO 228-1. |
| Internal thread | "G" cylindrical thread: Whitworth pipe thread DIN ISO 228-1 G 1/8 up to G 1/2 |

OPERATING PRESSURE / TEMPERATURE

| | | | | | | | | |
|--|--|---------|------------------|------|----|------------------|---------|---|
| Metal version | <table border="1"> <tr> <td>PN</td> <td>T_{min}</td> <td>0 °C</td> </tr> <tr> <td>20</td> <td>T_{max}</td> <td>+140 °C</td> </tr> </table> | PN | T _{min} | 0 °C | 20 | T _{max} | +140 °C | Means that the allowable operating pressure OP corresponds to the given nominal pressure PN in the specified temperature range "T". Can be loaded up to 200 °C for a short time (see information on data sheet) |
| PN | T _{min} | 0 °C | | | | | | |
| 20 | T _{max} | +140 °C | | | | | | |
| Allowable operating pressure and operating temperature of pipe/tube must be observed! | | | | | | | | |

THREAD SEAL

| | |
|------------------------------------|--|
| Cylindrical threaded nipple | Thread seal FKM O-ring applies to all cylindrical threaded nipples |
| Conical threaded nipple | Seal with Teflon tape winding (FDA-compliant) on request |

"ROTATABLE" VERSION

| | | |
|--|--|--|
| 90° elbow- and T- adaptor, male | not suitable for rotating or oscill. movements | Some types of fittings rotate 360° in order to facilitate alignment during assembly. |
|--|--|--|

SPECIAL VERSIONS (NOT INCLUDED IN THE CATALOG)

We also manufacture ELSA push-in fittings in various customer-specific versions.

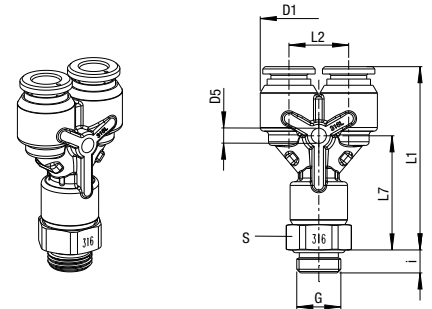
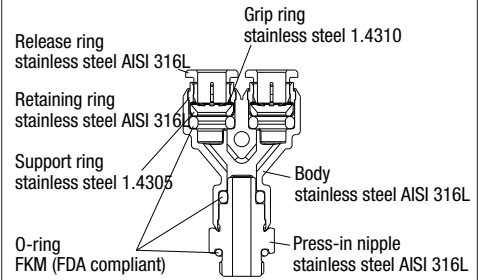
- other O-ring materials such as EPDM, FDA-compliant
- for pipe/tube with inch dimensions
- threaded connection, metric
- Versions according to ASTM G93 and EN ISO 15001 for oxygen use
- PVDF/PPSU release ring

Y-Adaptor - Male - Positionable

| | | | | | | | | | | | | | | | |
|--------------|-----------|----|----|------------------|------|------------------|---------|--------|-------------|--------------------|----------------------|---|---|-----------|-----------|
| Preis Gruppe | 13 | PN | 16 | T _{min} | 0 °C | T _{max} | +140 °C | Thread | cylindrical | Thread sealed by a | FKM O-Ring in recess | not suitable for rotating or oscill. movement |  | Edelstahl | AISI 316L |
|--------------|-----------|----|----|------------------|------|------------------|---------|--------|-------------|--------------------|----------------------|---|---|-----------|-----------|

| für Schlauch D | G | D1 | D5 | L1 | L2 | L7 | S | i | Gewicht in [g] | Typ | Bestellnummer |
|----------------|-------|------|-----|------|------|------|----|---|----------------|------------------|---------------|
| 4 | G 1/8 | 10.5 | 3.3 | 35.7 | 11 | 21.4 | 13 | 5 | 27.6 | 992X44M-4FF-1/8 | 385420 |
| 4 | G 1/4 | 10.5 | 3.3 | 37 | 11 | 22 | 17 | 7 | 37.9 | 992X44M-4FF-1/4 | 385421 |
| 6 | G 1/8 | 12.5 | 3.3 | 39.9 | 13 | 24.9 | 13 | 5 | 36.5 | 992X44M-6FF-1/8 | 385422 |
| 6 | G 1/4 | 12.5 | 3.3 | 39.6 | 13 | 24.6 | 17 | 7 | 45.5 | 992X44M-6FF-1/4 | 385423 |
| 6 | G 3/8 | 12.5 | 3.3 | 39.6 | 13 | 24.6 | 19 | 8 | 54.6 | 992X44M-6FF-3/8 | 385424 |
| 8 | G 1/8 | 14.5 | 4.3 | 44.1 | 15.5 | 27.4 | 15 | 5 | 49.6 | 992X44M-8FF-1/8 | 385425 |
| 8 | G 1/4 | 14.5 | 4.3 | 45.6 | 15.5 | 28.9 | 17 | 7 | 56.9 | 992X44M-8FF-1/4 | 385426 |
| 8 | G 3/8 | 14.5 | 4.3 | 45.6 | 15.5 | 28.9 | 19 | 8 | 65.8 | 992X44M-8FF-3/8 | 385427 |
| 10 | G 1/4 | 17 | 4.3 | 51.2 | 18 | 33.1 | 17 | 7 | 74.3 | 992X44M-10FF-1/4 | 385428 |
| 10 | G 3/8 | 17 | 4.3 | 52 | 18 | 33.9 | 19 | 8 | 84.2 | 992X44M-10FF-3/8 | 385429 |
| 10 | G 1/2 | 17 | 4.3 | 52.9 | 18 | 34.8 | 24 | 9 | 105.6 | 992X44M-10FF-1/2 | 385430 |
| 12 | G 1/2 | 20.5 | 4.3 | 56.7 | 21.5 | 36.9 | 22 | 7 | 124.9 | 992X44M-12FF-1/4 | 385431 |
| 12 | G 3/8 | 20.5 | 4.3 | 56.7 | 21.5 | 36.9 | 22 | 8 | 128.1 | 992X44M-12FF-3/8 | 385432 |
| 12 | G 1/2 | 20.5 | 4.3 | 58.2 | 21.5 | 38.4 | 24 | 9 | 143 | 992X44M-12FF-1/2 | 385433 |

Illustration

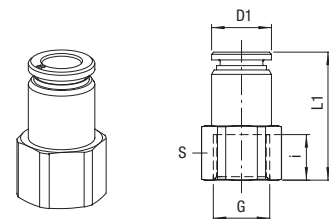
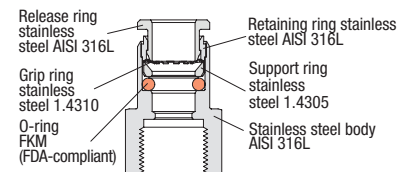


Straight Adaptor - Female

| | | | | | | | | | | | | |
|-------------|-----------|----|----|------------------|------|------------------|---------|--------|-------------|---|-----------------|-----------|
| Price group | 13 | PN | 20 | T _{min} | 0 °C | T _{max} | +140 °C | Thread | cylindrical |  | Stainless steel | AISI 316L |
|-------------|-----------|----|----|------------------|------|------------------|---------|--------|-------------|---|-----------------|-----------|

| for tube D | G | i | L1 | D1 | S | Weight in [g] | Type | Order number | Price |
|------------|-------|----|------|------|----|---------------|-----------------|--------------|-------|
| 4 | G 1/8 | 7 | 23.8 | 9.8 | 13 | 11.1 | 946X44-4FF-1/8 | 385061 | o. r. |
| 4 | G 1/4 | 9 | 26.8 | 9.8 | 17 | 21.7 | 946X44-4FF-1/4 | 385062 | o. r. |
| 6 | G 1/8 | 7 | 25.2 | 11.8 | 13 | 13.2 | 946X44-6FF-1/8 | 385063 | o. r. |
| 6 | G 1/4 | 9 | 27.7 | 11.9 | 17 | 23.6 | 946X44-6FF-1/4 | 385064 | o. r. |
| 6 | G 3/8 | 10 | 28.7 | 11.8 | 19 | 24.5 | 946X44-6FF-3/8 | 385065 | o. r. |
| 8 | G 1/8 | 7 | 27.1 | 13.8 | 14 | 19.6 | 946X44-8FF-1/8 | 385066 | o. r. |
| 8 | G 1/4 | 9 | 29.6 | 13.8 | 17 | 26.2 | 946X44-8FF-1/4 | 385067 | o. r. |
| 8 | G 3/8 | 10 | 30.6 | 13.8 | 19 | 27.2 | 946X44-8FF-3/8 | 385068 | o. r. |
| 10 | G 1/4 | 9 | 32.1 | 16.4 | 17 | 31.8 | 946X44-10FF-1/4 | 385069 | o. r. |
| 10 | G 3/8 | 10 | 33.1 | 16.4 | 19 | 33.2 | 946X44-10FF-3/8 | 385070 | o. r. |
| 10 | G 1/2 | 13 | 36.6 | 16.4 | 24 | 51.6 | 946X44-10FF-1/2 | 385071 | o. r. |
| 12 | G 1/4 | 9 | 35 | 19.8 | 22 | 62.3 | 946X44-12FF-1/4 | 385072 | o. r. |
| 12 | G 3/8 | 10 | 36 | 19.8 | 22 | 57.3 | 946X44-12FF-3/8 | 385073 | o. r. |
| 12 | G 1/2 | 13 | 39.5 | 19.8 | 24 | 63 | 946X44-12FF-1/2 | 385074 | o. r. |

Illustration





info@iq-parts.nl
Harsweg 34A
2461 EZ Ter Aar
T +31 252 624 126
The Netherlands