

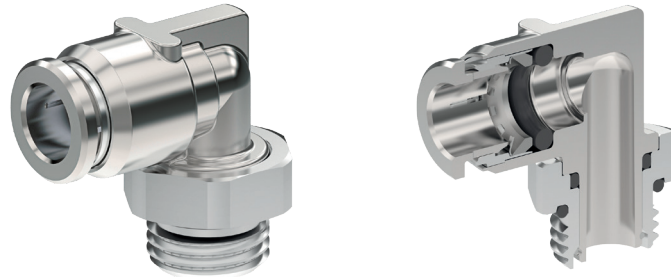
iQ parts
IQ-PARTS-SHOP.COM



**SPECS &
INFORMATION**

ELSA Fittings Stainless Steel AISI 316L (1.4404) (Push-in)

ELSA the Established push-in connector from AVS Römer



Stainless steel version

Operating pressure Technical vacuum up to maximum pressure as stated in the respective specification table under PN. Temperature range 0 °C to +200 °C (for restrictions see specification table)

Application

ELSA push-in fittings made of stainless steel 1.4404 are used in particular for aggressive gases and liquid media under harsh operating conditions. These push-in fittings are equipped with FDA-compliant FKM sealing rings as standard, on request, these are also available with FDA-compliant EPDM sealing rings approved according to the UBA elastomer guidelines.

CHARACTERISTICS

BODY MATERIAL / SUITABILITY

Stainless steel AISI 316L	Corresponds to 1.4404 stainless steel . Suitable for many aggressive media, in particular at higher pressures. The FKM seal is FDA-compliant and can be used in the food and pharmaceutical industries.
Other materials	see relevant products
Approval	NSF/ANSI 169

TUBE

Outside diameter [mm]	4, 6 and 8	10, 12
Permitted tolerance [mm]	±0.1	±0.15
Permitted grades	Polyamide (PA), polyurethane (PU), fluorine polymer (FEP and PFA)	

THREAD

External thread	"M" cylindrical thread: Metric ISO thread M5
External thread	"G" cylindrical thread: Whitworth pipe thread DIN ISO 228-1 G 1/8 up to G 3/8
External thread	"R" conical thread: Whitworth pipe thread DIN 2999-1 and ISO 7/1 R 1/8 up to R 1/2. Designed for pairing with internal thread according to DIN ISO 228-1.
Internal thread	"G" cylindrical thread: Whitworth pipe thread DIN ISO 228-1 G 1/8 up to G 1/2

OPERATING PRESSURE / TEMPERATURE

Metal version	<table border="1"> <tr> <td>PN</td> <td>T_{min}</td> <td>0 °C</td> </tr> <tr> <td>20</td> <td>T_{max}</td> <td>+140 °C</td> </tr> </table>	PN	T _{min}	0 °C	20	T _{max}	+140 °C	Means that the allowable operating pressure OP corresponds to the given nominal pressure PN in the specified temperature range "T". Can be loaded up to 200 °C for a short time (see information on data sheet)
PN	T _{min}	0 °C						
20	T _{max}	+140 °C						
Allowable operating pressure and operating temperature of pipe/tube must be observed!								

THREAD SEAL

Cylindrical threaded nipple	Thread seal FKM O-ring	applies to all cylindrical threaded nipples
Conical threaded nipple	Seal with Teflon tape winding (FDA-compliant) on request	

"ROTATABLE" VERSION


90° elbow- and T- adaptor, male	not suitable for rotating or oscill. movements	Some types of fittings rotate 360° in order to facilitate alignment during assembly.
--	--	--

SPECIAL VERSIONS (NOT INCLUDED IN THE CATALOG)

We also manufacture ELSA push-in fittings in various customer-specific versions.

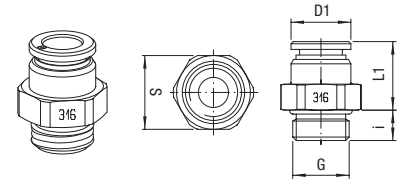
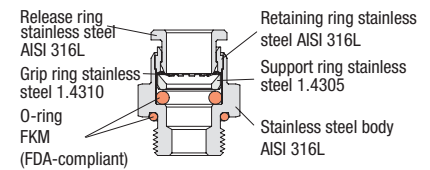
- other O-ring materials such as EPDM, FDA-compliant
- for pipe/tube with inch dimensions
- threaded connection, metric
- Versions according to ASTM G93 and EN ISO 15001 for oxygen use
- PVDF/PPSU release ring

Straight Adaptor - Male

Price group	13	PN	20	T _{min}	0 °C	T _{max}	+140 °C	Thread	cylindrical	Thread sealed by a	FKM O-Ring in recess		NSF	Stainless steel	AISI 316L
-------------	-----------	----	----	------------------	------	------------------	---------	--------	-------------	--------------------	----------------------	---	-----	-----------------	-----------

for tube D	G	i	L1	D1	D2	S	Weight in [g]	Typ	Order number	Price
4	M 5	3.5	16.8	8	9.4	8	4.4	951X44-4FF-M5	385021	o. r.
4	G 1/8	5	14	9.8	-	13	9.9	951X44-4FF-1/8	385022	o. r.
4	G 1/4	7	11.8	9.8	-	17	17.7	951X44-4FF-1/4	385023	o. r.
6	M 5	3.5	17.7	10	11.4	10	6.1	951X44-6FF-M5	385024	o. r.
6	G 1/8	5	15.2	11.8	-	13	15	951X44-6FF-1/8	385025	o. r.
6	G 1/4	7	14.7	11.8	-	17	18.6	951X44-6FF-1/4	385026	o. r.
6	G 3/8	8	12	11.8	-	19	25.6	951X44-6FF-3/8	385019	o. r.
8	G 1/8	5	20.2	13.8	-	14	14.6	951X44-8FF-1/8	385027	o. r.
8	G 1/4	7	15.9	13.8	-	17	11.9	951X44-8FF-1/4	385028	o. r.
8	G 3/8	8	15.9	13.8	-	19	26.8	951X44-8FF-3/8	385029	o. r.
10	G 1/4	7	22.3	16.4	-	17	24.9	951X44-10FF-1/4	385030	o. r.
10	G 3/8	8	17.6	16.4	-	19	25.4	951X44-10FF-3/8	385031	o. r.
10	G 1/2	9	15.6	16.4	-	24	43.6	951X44-10FF-1/2	385032	o. r.
12	G 1/4	7	25	19.8	-	22	39.3	951X44-12FF-1/4	385033	o. r.
12	G 3/8	8	19.5	19.8	-	22	32.2	951X44-12FF-3/8	385034	o. r.
12	G 1/2	9	18.5	19.8	-	24	45.21	951X44-12FF-1/2	385035	o. r.

Illustration

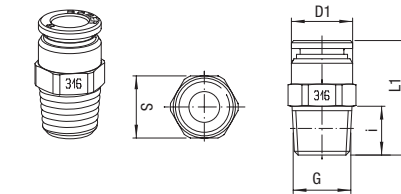
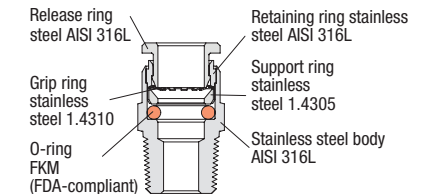


Straight Adaptor - Male

Price group	13	PN	20	T _{min}	0 °C	T _{max}	+140 °C	Thread	conical		NSF	Stainless steel	AISI 316L
-------------	-----------	----	----	------------------	------	------------------	---------	--------	---------	---	-----	-----------------	-----------

for tube D	G	i	L1	D1	S	Weight in [g]	Type	Order number	Price
4	R 1/8	7.5	20.5	9.8	10	8.3	951X44-4FF-1/8K	385040	o. r.
4	R 1/4	11	22.8	9.8	14	17.9	951X44-4FF-1/4K	385041	o. r.
6	R 1/8	7.5	21.7	11.8	12	9.9	951X44-6FF-1/8K	385042	o. r.
6	R 1/4	11	24.7	11.8	14	18.1	951X44-6FF-1/4K	385043	o. r.
8	R 1/8	7.5	27.2	13.8	14	15.3	951X44-8FF-1/8K	385044	o. r.
8	R 1/4	11	26.7	13.8	14	16.2	951X44-8FF-1/4K	385045	o. r.
8	R 3/8	11.5	24.7	13.8	17	26.5	951X44-8FF-3/8K	385046	o. r.
10	R 1/4	11	32.6	16.4	17	27.3	951X44-10FF-1/4K	385047	o. r.
10	R 3/8	11.5	28.1	16.4	17	27.7	951X44-10FF-3/8K	385048	o. r.
10	R 1/2	14	26.6	16.4	22	47.5	951X44-10FF-1/2K	385049	o. r.
12	R 1/4	11	34.8	19.8	22	41.2	951X44-12FF-1/4K	385050	o. r.
12	R 3/8	11.5	30	19.8	22	35.9	951X44-12FF-3/8K	385051	o. r.
12	R 1/2	14	31.5	19.8	22	50.9	951X44-12FF-1/2K	385052	o. r.

Illustration

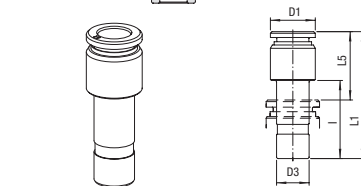
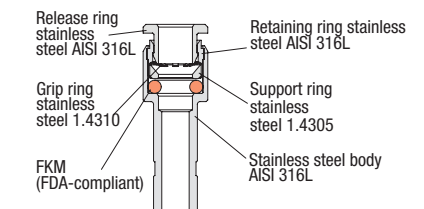


Straight Stem Reducer

Price group	13	PN	20	T _{min}	0 °C	T _{max}	+140 °C		NSF	Stainless steel	AISI 316L
-------------	-----------	----	----	------------------	------	------------------	---------	---	-----	-----------------	-----------

for tube D	D3	i	L1	L5	D1	Weight in [g]	Type	Order number	Price
4	6	18	31.3	15.7	9.8	7.26	947X44-4FF-D6	385390	o. r.
6	8	20	34.2	16.6	11.8	10.8	947X44-6FF-D8	385391	o. r.
8	10	24	39.1	19	13.8	15.4	947X44-8FF-D10	385392	o. r.
10	12	26	42.6	20.6	16.4	21.9	947X44-10FF-D12	385393	o. r.
4	8	20	34	16.5	9.8	11.5	947X44-4FF-D8	385396	o. r.
6	10	24	39	18.9	11.8	17.7	947X44-6FF-D10	385397	o. r.
8	12	26	42	13.9	13.8	23.8	947X44-8FF-D12	385398	o. r.

Illustration

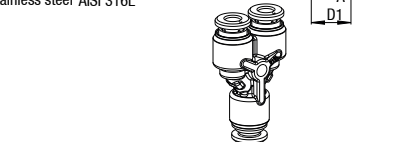
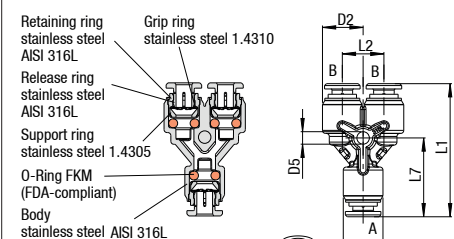


Y-Connector

Price group	13	PN	20	T _{min}	0 °C	T _{max}	+140 °C		NSF	Stainless steel	AISI 316L
-------------	-----------	----	----	------------------	------	------------------	---------	---	-----	-----------------	-----------

for tube D	D3	L1	L2	L7	D1	D2	D5	Weight in [g]	Type	Order number	Price
4	4	35.2	11	20.9	10.5	10.5	3.3	19.5	982X44M-4FF	385230	o. r.
6	6	39.1	13	24.1	12.5	12.5	3.3	28.5	982X44M-6FF	385232	o. r.
8	8	45.5	15.5	28.8	14.5	14.5	4.3	41	982X44M-8FF	385234	o. r.
10	10	51.8	18	33.7	17	17	4.3	61.9	982X44M-10FF	385236	o. r.
12	12	57.2	21.5	37.4	20.5	20.5	4.3	97.2	982X44M-12FF	385238	o. r.

Illustration





info@iq-parts.nl
Harsweg 34A
2461 EZ Ter Aar
T +31 252 624 126
The Netherlands