

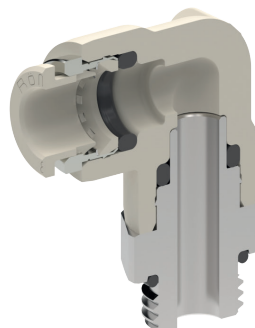
iQ parts
IQ-PARTS-SHOP.COM



**SPECS &
INFORMATION**

ELSA Fittings PPSU (Push-in)

ELSA the Established push-in connector from AVS Römer


PPSU version

Operating pressure Technical vacuum up to maximum pressure as stated in the respective specification table under OP.

Temperature range 0 °C to +140 °C (for restrictions see specification table)

Application

ELSA push-in connectors made from PPSU are used mainly in the food industries for liquids with temperatures up to 140 °C. (hot water, coffee, steam,...). These push-in connectors are equipped with FDA-compliant FKM sealing rings as standard, on request, these are also available with FDA-compliant EPDM sealing rings approved according to the UBA elastomer guidelines. These high-tech plastic fittings are a low-cost alternative to stainless steel fittings in many areas of application.

CHARACTERISTICS
BODY MATERIAL / SUITABILITY

Plastic PPSU	Polyphenylsulfone. Suitable for many aggressive media with temperatures up to 140 °C (hot water, steam). The FKM sealing ring is FDA-compliant and can be used in the food and pharmaceutical industries. Caution! PPSU should not be used in contact with aromatic hydrocarbons, oxidising acids, acetone, chlorinated hydrocarbons, ethers or ketones! Also, PPSU should not be placed directly in contact with anaerobic adhesives!
--------------	---

Other materials	see relevant products
-----------------	-----------------------

Approval	NSF/ANSI 169, PPSU body conforms to KTW-BWGL
----------	--

TUBE

Outside diameter [mm]	4, 6, 8 and 10
Permitted tolerance [mm]	±0.1
Permitted grades	Polyamide (PA), polyurethane (PU), fluorine polymer (FEP and PFA)

THREAD

External thread	“M” cylindrical thread: Metric ISO thread M5
External thread	“G” cylindrical thread: Whitworth pipe thread DIN ISO 228-1 G 1/8 up to G 3/8
Internal thread	“G” cylindrical thread: Whitworth pipe thread DIN ISO 228-1 G 1/8 up to G 1/4

OPERATING PRESSURE / TEMPERATURE

Plastic version	<table border="1"> <tr> <td>Max. Operating pressure OP at the stated ambient temp. and medium temp. according to table</td> <td>Means that the allowable operating pressure OP within the allowable ambient temperature also depends on the medium temperature in accordance with the specification table.</td> </tr> </table>	Max. Operating pressure OP at the stated ambient temp. and medium temp. according to table	Means that the allowable operating pressure OP within the allowable ambient temperature also depends on the medium temperature in accordance with the specification table.
Max. Operating pressure OP at the stated ambient temp. and medium temp. according to table	Means that the allowable operating pressure OP within the allowable ambient temperature also depends on the medium temperature in accordance with the specification table.		
Allowable operating pressure and operating temperature of pipe/tube must be observed!			

THREAD SEAL

Cylindrical threaded nipple	<table border="1"> <tr> <td>Thread sealed by a FKM O-Ring in recess</td> <td>applies to all cylindrical threaded nipples</td> </tr> </table>	Thread sealed by a FKM O-Ring in recess	applies to all cylindrical threaded nipples
Thread sealed by a FKM O-Ring in recess	applies to all cylindrical threaded nipples		

“ROTATABLE” VERSION

90° elbow-, T- and Y-adaptors, male	<table border="1"> <tr> <td>not suitable for rotating or oscill. movements</td> <td>Some types of fittings rotate 360° in order to facilitate alignment during assembly.</td> </tr> </table>	not suitable for rotating or oscill. movements	Some types of fittings rotate 360° in order to facilitate alignment during assembly.
not suitable for rotating or oscill. movements	Some types of fittings rotate 360° in order to facilitate alignment during assembly.		

SPECIAL VERSIONS (NOT INCLUDED IN THE CATALOG)

We also manufacture ELSA push-in fittings in various customer-specific versions.

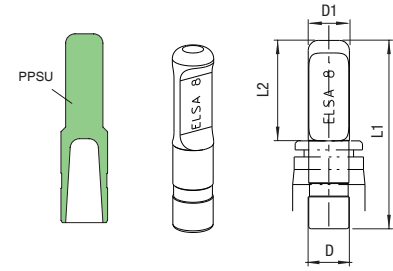
- other O-ring materials such as EPDM, FDA-compliant
- for pipe/tube with inch dimensions
- “R” conical threaded fitting
- Execution according to ASTM G93 or EN ISO 15001 for oxygen use

Push-in Plug

 Price group **15** Max. allow. OP at ambient temp.
 $T_{min} -20\text{ °C}$, $T_{max} +60\text{ °C}$

Plastic PPSU

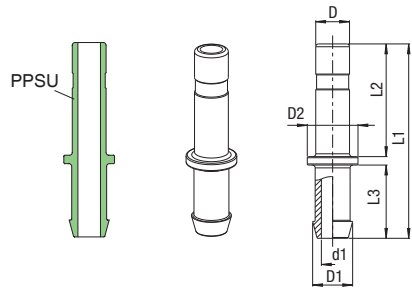
for push-in connector D	Max. allow. OP [bar] at medium temp.			L1	L2	D1	Weight in [g]	Type	Order number	Price
	20 °C	100 °C	140 °C							
4	20	16	10	31.5	16.7	6.2	0.5	971P3-4	237495	o. r.
6	20	16	10	34.5	18.9	8.2	1.1	971P3-6	237496	o. r.
8	16	12	10	37.5	19.9	8.2	1.3	971P3-8	237497	o. r.

Illustration

Straight Stem Connector with Hose Tail

 Price group **15** Max. allow. OP at ambient temp.
 $T_{min} -20\text{ °C}$, $T_{max} +60\text{ °C}$

Plastic PPSU

for push-in connection	for tube LW	Max. allow. OP [bar] at medium temp.			d1	L1	L2	L3	D1	D2	Weight in [g]	Type	Order number	Price
		20 °C	100 °C	140 °C										
4	2.7-3	20	16	10	1.8	27	17	8.5	3.6	5.5	0.3	907P3-D4-3	281181	o. r.
4	3.5-4	20	16	10	2.5	28.5	17	10	5.1	6	0.4	907P3-D4-4	281182	o. r.
6	2.7-3	20	16	10	1.8	28.5	20	8.5	3.6	6	0.5	907P3-D6-3	281183	o. r.
6	3.5-4	20	16	10	2.8	30	20	10	5.1	6	0.6	907P3-D6-4	281184	o. r.
6	5-6	20	16	10	4	34.5	20	13	7.1	9	0.9	907P3-D6-7	281185	o. r.
6	7-8	20	16	10	4	39	18	19.5	9.5	13	1.3	907P3-D6-9	281187	o. r.

Illustration

Straight Adaptor - Male

 Price group **15** Max. allow. OP at ambient temp.
 $T_{min} 0\text{ °C}$, $T_{max} +60\text{ °C}$

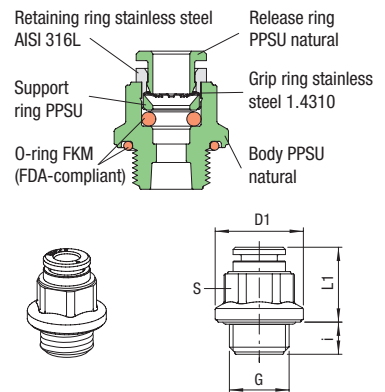
Thread cylindrical

Thread sealed by a FKM O-Ring in recess

Tightening torque 3-3.5 Nm


Plastic PPSU

for tube D	G	Max. allow. OP [bar] at medium temp.			i	L1	D1	S	Weight in [g]	Type	Order number	Price
		20 °C	100 °C	140 °C								
4	G 1/8	20	16	10	6	16.8	15.8	14	4.1	951P3-4FF-1/8	367051	o. r.
4	G 1/4	20	16	10	7	15.8	19.2	14	5	951P3-4FF-1/4	367052	o. r.
6	G 1/8	20	16	10	6	17.3	15.8	14	4.3	951P3-6FF-1/8	367053	o. r.
6	G 1/4	20	16	10	7	16.3	19.2	14	4.9	951P3-6FF-1/4	367054	o. r.
8	G 1/4	16	12	6	7	19.2	19.2	17	a. A.	951P3-8FF-1/4	367055	o. r.
8	G 3/8	16	12	6	8	17.2	22.8	17	a. A.	951P3-8FF-3/8	367056	o. r.

Illustration

90° Elbow Adaptor - Male - Positionable

 Price group **15** Max. allow. OP at ambient temp.
 $T_{min} 0\text{ °C}$, $T_{max} +60\text{ °C}$

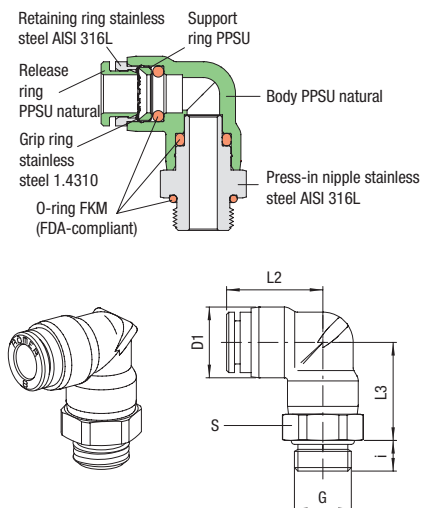
Thread cylindrical

Thread sealed by a FKM O-Ring in recess

not suitable for rotating or oscill. movement


Plastic PPSU

for tube D	G	Max. allow. OP [bar] at medium temp.			i	L2	L3	D1	S	Weight in [g]	Type	Order number	Price
		20 °C	100 °C	140 °C									
4	M 5	20	16	10	3.5	14.9	11.1	10	8	3.7	930P3-4FF-M5	367057	o. r.
4	G 1/8	20	16	10	5	17.7	18.4	11.9	13	12.8	930P3-4FF-1/8	367058	o. r.
4	G 1/4	20	16	10	7	18.9	20.1	13.9	17	24.6	930P3-4FF-1/4	367059	o. r.
6	M 5	20	16	10	3.5	16.9	11.1	12	8	4.3	930P3-6FF-M5	367060	o. r.
6	G 1/8	20	16	10	5	19.4	19.6	13.9	13	15.9	930P3-6FF-1/8	367061	o. r.
6	G 1/4	20	16	10	7	19.4	20.1	13.9	17	24.7	930P3-6FF-1/4	367062	o. r.
8	G 1/8	16	12	6	5	22.4	22.7	17.2	17	24.2	930P3-8FF-1/8	366805	o. r.
8	G 1/4	16	12	6	7	22.4	22.7	17.2	17	40.0	930P3-8FF-1/4	366806	o. r.
8	G 3/8	16	12	6	8	22.4	22.7	17.2	19	36.7	930P3-8FF-3/8	366807	o. r.

Illustration




info@iq-parts.nl
Harsweg 34A
2461 EZ Ter Aar
T +31 252 624 126
The Netherlands